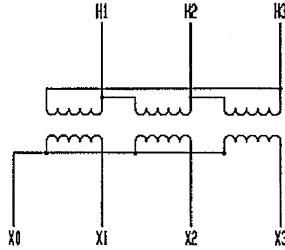
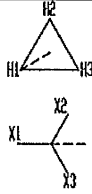


COOPER 3 ϕ TRANSFORMER

3000	CLASS \square A	CONT RTSE 65	°C/60Hz
MFG DATE		MFG DATE	
CP		000C2A69K26S	
26400			
480Y/277		6.72%IZ @ 85°C	
HV KV BIL	150	WHEN MANUFACTURED CONTAINED LESS THAN 1 PPM PCB'S CAUTION - READ INSTRUCTION MANUAL S210-12-1	
HV NEUTRAL KV BIL	--		
LV KV BIL	30		
HV/LV CONDUCTOR	CU/AL		

APPROX. WEIGHT IN LBS.

CORE & COIL UNTANKING	8399
TANK & FIT	4605
FLUID OIL GALLONS: 711	5261
TOTAL	18265



TAP	VOLTAGE	MAX AMPS
A	27720	62.5
B	27060	64.0
C	26400	65.6
D	25740	67.3
E	25080	69.1

MAX AMPS AT 3000 KVA
%IZ IS @ BASE KVA & RATED VOLTAGE



TRANSFORMER PRODUCTS
WAUKESHA, WI U.S.A.

1189601A8392-00

- NOTES:
- 1) ACTUAL PLATE IS A NEGATIVE OF THE ABOVE DRAWING.
 - 2) ACTUAL %IZ TO BE STAMPED IN AFTER TESTING.

NAMEPLATE MATERIAL: ALUMINUM

634252,001

REVISION

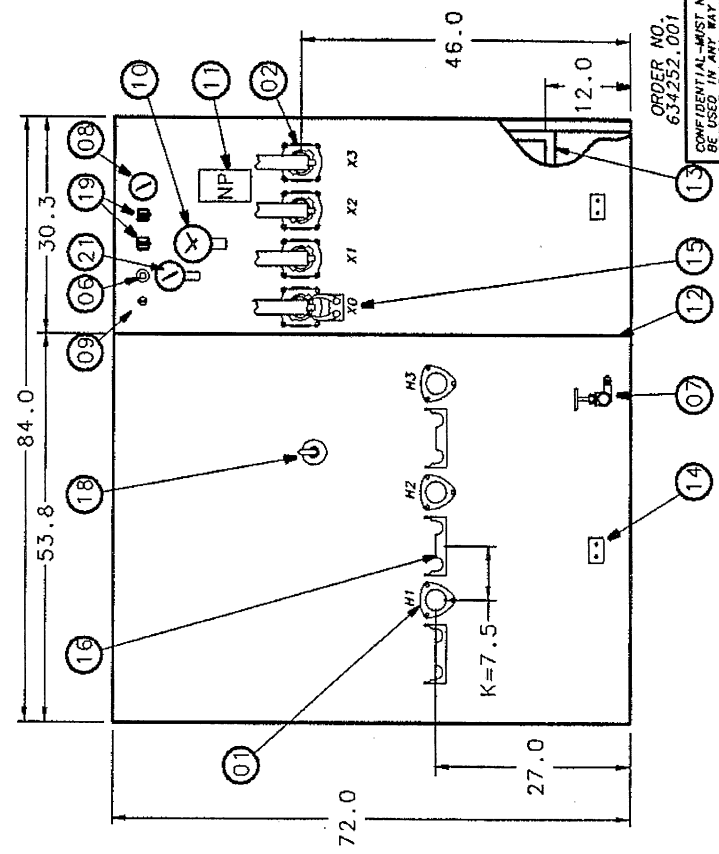
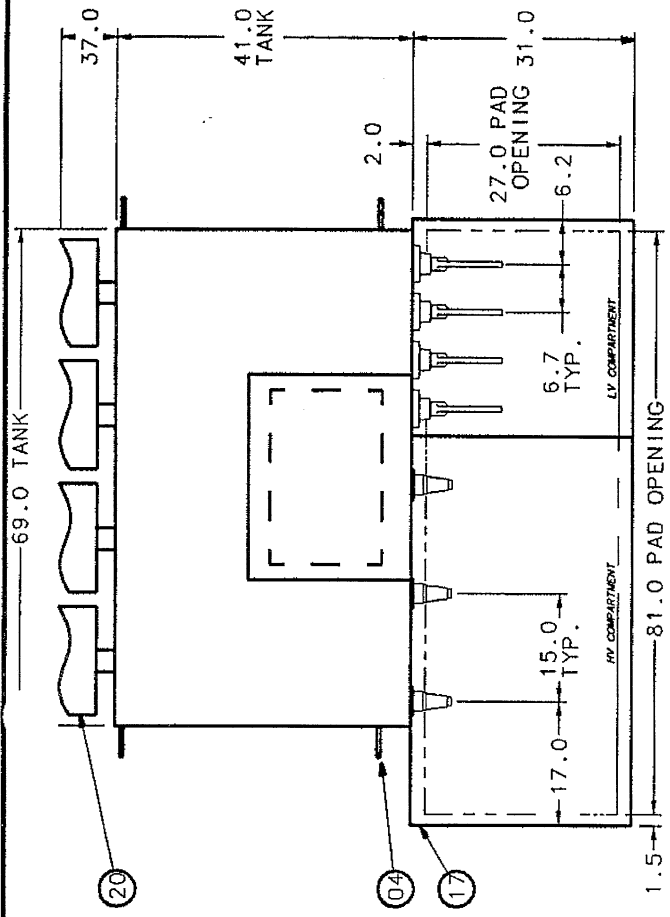
COOPER TRANSFORMER PRODUCTS
WAUKESHA, WI U.S.A.

PART NAME
NAMEPLATE

PRINT DIST:	ANGULAR +/- 2°	DWG RJH	CHK	ISS
	*	09-02-98	15:47:22	
	CRITICAL DIMENSION	SCALE	DTS	1189601A8392

3268

IT	DESCRIPTION
1	35 KV HIGH
2	LOW VOLTAGE BUSHING W/ 12-HOLE SPADE, SUPPORTED
3	TRANSFORMER TANK BASE W/JACKING AND ROLLING FACILITIES
4	LIFTING LUGS
5	WELDED COVER W/ 15.5 X 24" HANDHOLE
6	1.0" UPPER FILTER PRESS CONN. & FILL PLUG
7	1.0" DRAIN VALVE W/ SAMPLER
8	PRESSURE VACUUM GAUGE
9	PRESSURE RELIEF DEVICE
10	THERMOMETER W/ CONTACTS
11	NAMEPLATE
12	STEEL DIVIDER PLATE
13	REMOVABLE SILL
14	STAINLESS STEEL GROUND PAD
15	XO EXTERNALLY GROUNDED
16	PARKING STAND
17	HIGH SECURITY CABINET WITH PENTAHEAD DOOR BOLTS
18	TAP CHANGER
19	PRESSURE & VACUUM SWITCHES
20	COOLING RADIATORS
21	MAGNETIC OIL LEVEL GAUGE W/ CONTACTS



CATALOG # 000C2A69K26S
 TRANSFORMER PRODUCTS
 WAUWATSEGA, WI
 3PH PADMOUNT TRANSFORMER
 3000 KVA 0A65°C OIL FILLED
 HV 26400 DELTA
 LV 480Y/277
 EPP/ TOWER AUTOMOTIVE
 08-12-98 08-12-98 73878C567
 0157, 17 74566 PR 3268

ORDER NO. 634252.001
 CONVENTIONAL - MUST NOT BE USED IN ANY MANNER DEPENDANT TO COOPER POWER SYSTEMS